

Ivanti Environment Manager

Ivanti® Environment Manager navigates complex and mixed Windows desktop infrastructures to deliver a consistent and portable user environment while ensuring a smooth migration to Windows 10 / 11 or cloud-hosted desktops.

Achieve breakneck logon speeds and a personalized user experience, delivered quickly and easily by IT.

Outstanding User Experience

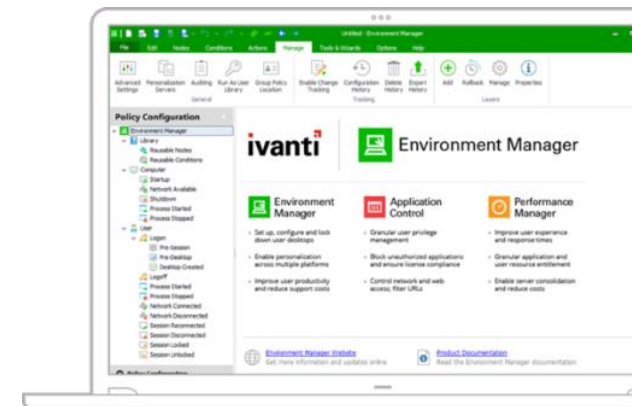
- **Ensure a Consistent User Workspace**

Reward users with a familiar workspace regardless of how their desktop is composed and delivered, while ensuring conditional settings can be applied—depending on the user’s context—to meet security and compliance mandates
- **Seamless Migration to Windows 10 or 11**

Remove the IT complexity and user upheaval typically associated with Windows 10 migration and enable fluid movement of user settings between physical, virtual, and cloud desktops
- **Release the Full Power of Office 365**

Deliver the ultimate Office 365 experience by roaming offline caches in non-persistent VDI and RD Session Host environments
- **Boost Productivity**

Accelerate logon times and increase productivity while liberating IT from slow and complex desktop configuration tools, such as logon scripts or Group Policy



“I wouldn’t embark on a virtual desktop deployment without it.”

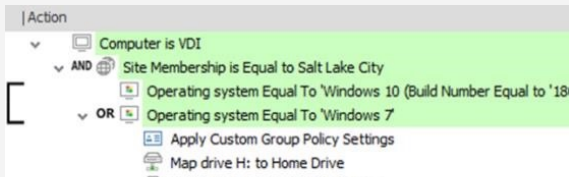
Andrew Anthony
 Manager, IT Infrastructure Team at Mills & Reeve

Key Feature: Contextual Policy Engine

Provide users with a desktop experience tailored to how and from where they log on, as well as from which device.

Context-aware conditions enable IT teams to configure custom desktop environments easily to accommodate security, compliance, and ease of use.

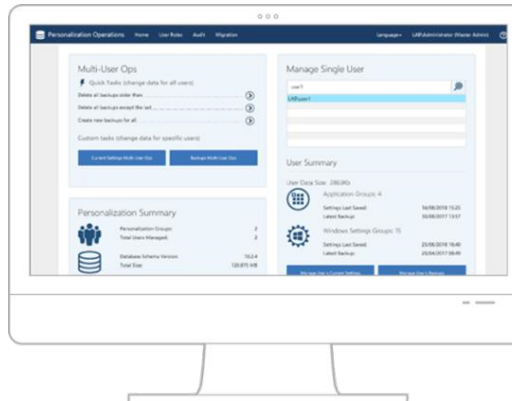
Easily combine rules sets to deliver Boolean Logic, enabling IT to satisfy any custom requirements.



Set desktop configuration actions to run simultaneously to speed up processing or consecutively to provide different levels of dependency. This provides a simple-to-use alternative to logon scripts and GPOs, reducing complexity for IT teams and improving the user experience. Where you have existing GPO settings, these can be easily imported and applied to desktops, significantly reducing your administration overhead and setup time.

User Personalization

- Automate the management of application and OS content, in real time, to remove the complexity associated with managing user profile settings
- Stream personal settings, on-demand, to ensure rapid logon times
- Easily rollback personal settings in the event of profile inconsistencies or corruption
- Self-service tools empower users to be self-sufficient and help reduce the burden on the IT support desk



Policy Configuration

- Apply desktop configuration actions simultaneously to speed up logon times
- Ease the strain on the logon process by setting desktop-configuration actions to apply on-demand, only when needed
- Complement built-in desktop configuration actions and conditions by creating custom items to cater to more complex, bespoke environments
- Simplify desktop configuration for IT Teams by removing the complexity of managing and maintaining logon scripts or GPO inheritance rules

“It’s allowed us to deliver a much more personalized experience to each user, while simplifying policy and application management.”

Rachel Dunscombe
CIO, Bolton NHS Foundation Trust

Key Feature: Effortless User Migration

Simplify migration projects with Environment Manager's unique User Personalization capabilities.

Automatically capture and roam users' personal settings easily across distinct operating systems and between physical, virtual, and cloud-based desktops.

Built-in templates provide out-of-the-box configuration settings for a host of common applications.

Self-service tools let users roll back their personal settings on a per-application or operating system-component basis in the event of profile corruption or inconsistencies, to help reduce IT support calls.

Personalization Analysis Tools ease management of user settings. A web-based Personalization Operations Console empowers IT to perform multi-user operations such as deleting, creating, or editing profile setting backups.

Major Benefits

- Deliver a superior user experience
- Reduce the IT complexity of desktop configuration
- Ease Windows 10 or 11 migrations
- Enable faster adoption of cloud services
- Provide an optimized Office 365 experience in nonpersistent desktop environments
- Proven enterprise scalability
- Built-in DR and failover for business continuity

User Workspace Manager

Ivanti Environment Manager is part of the Ivanti User Workspace Manager (UWM) suite, which also includes Application Control, Performance Manager, Performance Manager and File Director. Using a centralized management console for all of the Windows-based applications in the suite, UWM helps organizations to deliver responsive, secure desktops that provide an outstanding employee experience, save money on servers, manage users more effectively and reduce endpoint security risk.

The Ivanti logo consists of the word "ivanti" in a bold, lowercase, sans-serif font. The letter "i" is red, while the remaining letters "vanti" are black. A small registered trademark symbol (®) is located at the top right of the letter "i".A vertical bar on the right side of the page, transitioning from red at the top to orange at the bottom.

[ivanti.com](https://www.ivanti.com)

1 800 982 2130

sales@ivanti.com