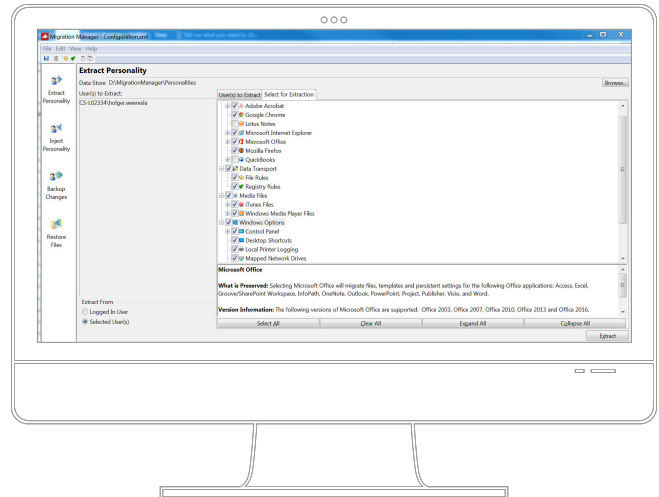


# Ivanti Migration Manager

## Productivity Protection through Automated User-Profile Migration

The user profile refers to the files and settings defined by the end user. There are few standards for the storage of user profiles. The lack of such standards means that considerable effort is required to back up and transfer user profiles. The resulting failure to make backups means that there is a considerable risk of data loss. The complexity of the problem becomes increasingly apparent during operating system migrations like Windows 10 or computer replacements. The effort required to provide users with their data following successful installations is often reason enough not to perform a migration or replace computers.



To avoid restricting employee productivity and to protect important data, companies require a high-performance user profile migration solution. By automating all necessary backup and restoration processes – and integrating this solution into the superordinate endpoint management system – IT administrators gain the necessary flexibility to react quickly to hardware and software malfunctions, malware threats, and internal company changes. It is essential to maintain a detailed record of the application data and settings to be backed up in order to establish a basis for standardizing the environment. Particularly in enterprises, the extended functions for storage capacity reduction and data security are essential.

### Reduction in Downtimes and Support Costs

Ivanti® Migration Manager allows you to fully automate the backup and migration of user profiles for all users on endpoints. Ivanti Migration Manager is deployed and executed in the background – “silently” – so that users never need to interact with the program. The solution records all user data and settings automatically, for example desktop layout, personalized adjustments, document templates, network connections, as well as files and folder structures.

The Registry Selector also takes registry keys and values into account for proprietary applications.

You can choose between local, LAN, WAN, or removable media as locations for saving the user profile. Various file versions can be recovered. Personalized user environments can therefore be restored in no time at all in the case of malfunctions or in the context of migration projects, thus reducing productivity losses and keeping cost-intensive, on-site support to a minimum.

### Focus on Enterprise Environments

Migration Manager was designed to address the particular concerns related to enterprise migrations and continuity management. The solution features excellent scalability and can be fully automated. In addition, Migration Manager has extended functionalities predestined for use in the enterprise. These allow you to reduce the storage space required for the user profile with delta backups that are often essential, particularly in large environments. In addition, the HTTP support enables data to be stored on web servers without providing access to the company network. Sensitive documents and settings are encrypted at your temporary

workstation and migrations to new systems can be restricted by password protection.

### Key Features

- Automated recording of all user data and settings
- Silent deployment and execution
- VSS (Volume Shadow Copy Service) Support
- Local, LAN, WAN, or removable media as storage locations
- Recovery of various file versions
- Delta backups of the user profile
- Registry selector for keys and values of proprietary applications
- HTTP support for backup on web servers
- Password-protected file recovery
- Encryption of data at temporary storage locations
- Rules-based migration

### Key Benefits

Smooth migration of personal files and settings, even in large environments

- Windows 10 migration support
- Decreased support costs
- Fast data recovery following malfunctions
- Complete automation of all user profile-related tasks
- System standardization
- Protection of sensitive data and settings

### Standardization through Rules-Based Migration

With Migration Manager, complicated scripts for migrating user settings are a thing of the past. Even without expert knowledge, you can select with a few mouse-clicks the users and applications Migration Manager is to record. Using predefined and configurable rules, IT administrators can decide exactly which files from the defined applications are to be migrated and where to save them – even for migrations between different operating systems and application versions. Audit logs record the capturing or restoring of all files and settings. This enables you to achieve a standardized environment that is easier and more economical to maintain.

### Additional Malware Protection

Owing to the ubiquitous threat of viruses, worms, spyware, and the like, leading security experts recommend that companies automate processes for deleting hard disks and reinstalling operating systems. By combining Migration Manager with its tools for malware analysis, you can achieve an increased level of security and, at the same time, ensure employee productivity.

As soon as a malware infection is discovered, you can have the antivirus scanner clean the stored data. With unified endpoint management solutions from Ivanti, the infected systems are patched speedily with a clean operating system and Migration Manager restores the personalized application environment automatically. The scheduled backups provided also form the ideal basis for a routine reinstallation of all systems, which will stifle malware infections at their very outset.



[www.ivanti.com](http://www.ivanti.com)



+1-888-253-6201



[sales@ivanti.com](mailto:sales@ivanti.com)